

START

1

Resistor - Weerstand - Résistance - Widerstand - Resistencia - Motstand - Vastus - Resistenze

R1,R2,R3, R4: 1K

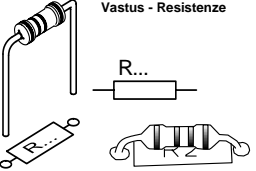
R5,R6: 82K

R7,R8: 100K

(Brown, Black, Red) -(Bruin, Zwart, Rood) -(Brun, Noir, Rouge) -(Braun, Schwarz, Rot) -(Brun, Svart, Röd) -(Ruskea, Musta, Punainen) -(Marrón, Negro, Rojo) -(Castanho, Preto, Encarnado) -(Marrone, Nero, Rosso)

(Grey, Red, Orange) -(Grijs, Rood, Oranje) -(Gris, Rouge, Orange) -(Grau, Rot, Orange) -(Grå, Röd, Orange) -(Harmaa, Punainen, Oranssi) -(Gris, Rojo, Naranja) -(Cinzento, Encarnado, Laranja) -(Grigio, Rosso, Aranciato)

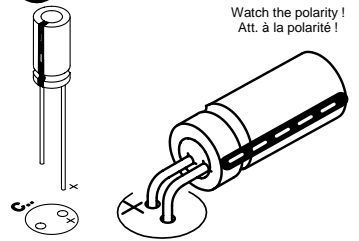
(Brown, Black, Yellow) -(Bruin, zwart, Geel) -(Brun, noir, Jaune) -(Braun, Schwarz, Gelb) -(Brun, Svart, Gul) -(Ruskea, Musta, Keltainen) -(Marrón, Negro, Amarillo) -(Castanho, Preto, Amarelo) -(Marrone, Nero, Giallo)



2

ELECTROLYTIC CAPACITOR

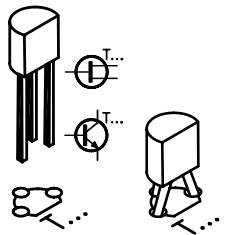
Watch the polarity !
Att. à la polarité !



- ◇ C1: 10µF
- ◇ C2: 10µF
- ◇ C3: 10µF
- ◇ C4: 10µF

3

TRANSISTOR

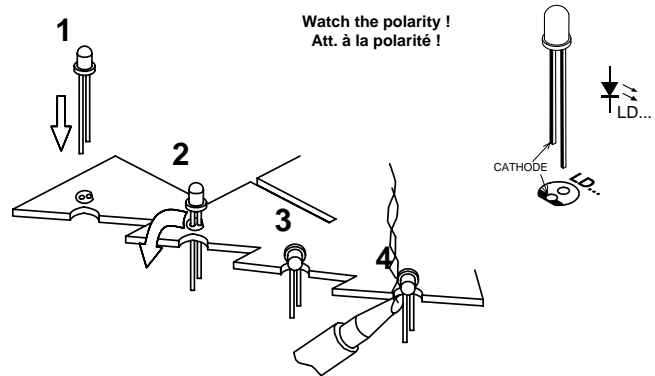


- ◇ T1: BC547
- ◇ T2: BC547
- ◇ T3: BC547
- ◇ T4: BC547

4

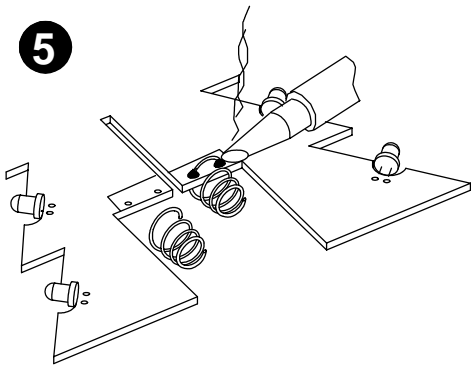
LED

Watch the polarity !
Att. à la polarité !



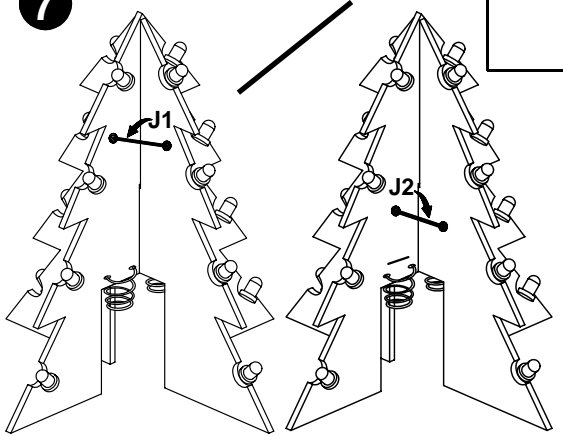
- ◇ LD1
- ◇ LD2
- ◇ LD3
- ◇ LD4
- ◇ LD5
- ◇ LD6
- ◇ LD7
- ◇ LD8
- ◇ LD9
- ◇ LD10
- ◇ LD11
- ◇ LD12
- ◇ LD13
- ◇ LD14
- ◇ LD15
- ◇ LD16

5

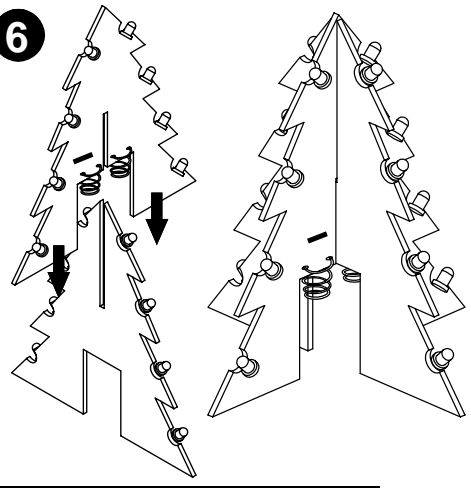


7

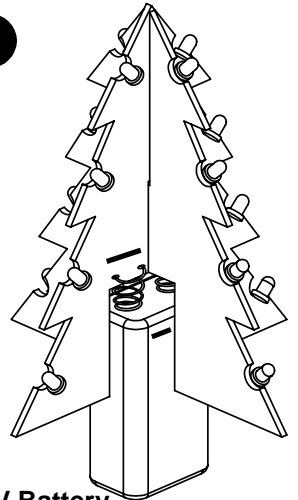
WIRE JUMPERS



6



8



9V Battery

Watch the polarity !
Att. à la polarité !

